

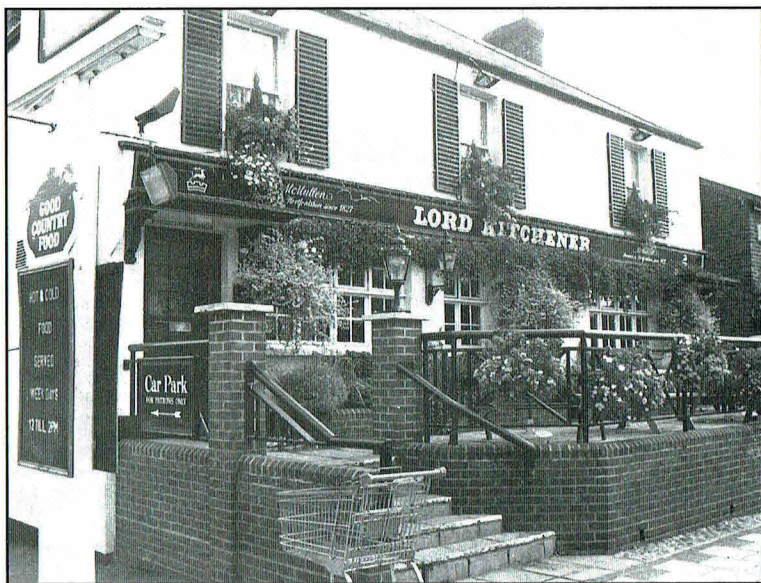
October  
1995

# LONDON



30p

# DRINKER



**The Lord Kitchener, East Barnet Road, New Barnet**  
*– A mere trolley push from Sainsbury's*

**Photo by: Andy Milne**

Vol 17

Produced by the London branches of the Campaign for Real Ale Ltd

No. 9

## Where to Buy London Drinker

The following is a list of all the current outlets for London Drinker of which the editors have been informed. Full addresses are only given where there are two pubs of the same name in the same postal district.

### OUTLETS – EAST and SOUTH EAST PUBS

EC1 ARTILLERY ARMS  
 EC1 BISHOPS FINGER  
 EC1 MASQUE HAUNT  
 EC1 PHEASANT & FIRKIN  
 EC1 ROSEBERRY  
 EC1 SEKFORDE ARMS  
 EC1 SHAKESPEARE  
 EC3 SWAN  
 EC4 BLACK FRIAR  
 E1 LORD RODNEYS HEAD  
 E2 CAMDENS HEAD  
 E3 IMPERIAL CROWN  
 E5 PRINCE OF WALES  
 E8 LADY DIANA  
 E9 FALCON & FIRKIN  
 E9 ROYAL STANDARD  
 E11 GEORGE  
 E13 VILLAGE  
 E14 QUEENS HEAD  
 E15 GOLDEN GROVE  
 DAGENHAM, LORD DENHAM  
 SE1 ANCHOR & HOPE  
 SE1 COPPER  
 SE1 FOUNDERS ARMS  
 SE1 GEORGE TAVERN  
 SE1 GOOSE & FIRKIN  
 SE1 GRAPES  
 SE1 HORNIMAN AT HAYS  
 SE1 KINGS ARMS  
 SE1 MARKET PORTER  
 SE1 OLD BRIDGE HOUSE  
 SE1 PRINCE WILLIAM HENRY  
 SE1 SHIP, 68 Borough Road  
 SE1 ST GEORGES TAVERN  
 SE1 TRINITY ARMS  
 SE1 WHEATSHEAF  
 SE1 WHITE HART, Cornwall Street  
 SE3 BRITISH OAK  
 SE3 HARE & BILLET  
 SE3 PRINCESS OF WALES  
 SE5 FOX ON THE HILL  
 SE5 PHOENIX & FIRKIN  
 SE6 BLACK HORSE & HARROW  
 SE6 TIGERS HEAD  
 SE7 McDONNELLS  
 SE8 CRYSTAL PALACE TAVERN  
 SE8 DOG & BELL  
 SE8 ROYAL GEORGE  
 SE9 BANKERS DRAFT  
 SE10 ADMIRAL HARDY  
 SE10 ASHBURNHAM ARMS  
 SE10 RICHARD I  
 SE13 FOX & FIRKIN  
 SE13 HOGS HEAD  
 SE16 BLACKSMITHS ARMS  
 SE16 MANOR TAVERN  
 SE16 MOBY DICK  
 SE18 COOPERS ARMS (Plaisted's)  
 SE18 EARL OF CHATHAM  
 SE18 ROSE'S (PRINCE ALBERT)  
 SE18 VILLAGE BLACKSMITH  
 SE19 ROYAL ALBERT  
 SE20 MOON & STARS  
 SE22 CRYSTAL PALACE TAVERN  
 SE25 ALLIANCE  
 SE25 GOAT HOUSE  
 SE26 DULWICH WOOD HOUSE

ADDISCOMBE, CLARET WINE BAR  
 BARKING, BARKING DOG  
 BARKINGSIDE, NEW FAIRLOP  
 OAK  
 BEXLEY, BLUE ANCHOR  
 CROYDON, ARKWRIGHTS WHEEL  
 CROYDON, BUILDERS ARMS  
 CROYDON, DOG & BULL  
 CROYDON, FIDDLER & FIRKIN  
 CROYDON, GEORGE  
 CROYDON, PRINCESS ROYAL  
 CROYDON, ROYAL STANDARD  
 ILFORD, GREAT SPOON OF  
 ILFORD  
 LOUGHTON, LAST POST  
 PURLEY, FOXLEY HATCH  
 SOUTH CROYDON, FIDDLER  
 & FIRKIN  
 SOUTH CROYDON, RAIL VIEW  
 WALLINGTON, WHISPERING  
 MOON

### CLUBS

SE1 LENSURBY BAR, SHELL  
 INTERNATIONAL  
 SE3 BLACKHEATH &  
 NEWBRIDGE WMC  
 SE9 HOWERD CLUB  
 SE13 LEWISHAM LABOUR CLUB  
 SE18 PLUMSTEAD RADICAL  
 CLUB  
 CROYDON, RUSKIN HOUSE  
**OFF TRADE**  
 E18 Gales Off Licence, 204 High  
 Road, Woodford Green  
 SE3 Bitter Experience, 129 Lee Road  
 BROMLEY, Bitter End, 139 Masons  
 Hill

### OUTLETS – WEST CENTRAL and NORTH PUBS

WC1 CALTHORPE ARMS  
 WC1 CITTIE OF YORKE  
 WC1 ENTERPRISE  
 WC1 OLD MONK  
 WC1 PAKENHAM ARMS  
 WC1 PRINCESS LOUISE  
 WC1 RUGBY TAVERN  
 WC1 SUN  
 WC1 THREE CUPS  
 WC1 UNIVERSITY OF LONDON  
 WC2 CROWN & ANCHOR  
 WC2 FULMAR & FIRKIN  
 WC2 GEORGE IV  
 WC2 HOGS HEAD  
 WC2 MARQUESS OF ANGLESEY  
 WC2 MOON & SIXPENCE  
 N1 129 UPPER STREET  
 N1 COMPTON ARMS  
 N1 EARL OF RADNOR  
 N1 GEORGE & VULTURE  
 N1 MALT & HOPS  
 N1 MARQUESS TAVERN  
 N1 PRINCE ARTHUR  
 N1 WENLOCK ARMS  
 N2 WELCH'S ALE HOUSE  
 N4 OLD SUFFOLK PUNCH  
 BOWL  
 N4 TAP & SPILE  
 N4 WHITE LION OF MORTIMER  
 N4 WORLDS END

N6 OLD GATE HOUSE  
 N7 HOLLOWAY  
 N8 ELBOW ROOM  
 N8 RAILWAY TAVERN  
 N8 TOLL GATE  
 N9 LAMB  
 N11 BANKERS DRAFT  
 N12 TALLY HO  
 N13 WHOLE HOG  
 N16 NOBODY INN  
 N16 ROCHESTER CASTLE  
 N16 SHAKESPEARE  
 N17 CLUTTERBUCKS  
 N17 ELBOW ROOM  
 N17 NEW MOON  
 N19 DOG  
 N21 DOG & DUCK  
 N21 HALF MOON  
 N21 ORANGE TREE  
 N22 STARTING GATE  
 BARNET, MOON UNDER WATER  
 BARNET, WHITE LION  
 BARNET, YE OLDE MONKEN HOLT  
 COCKFOSTERS, TRENT TAVERN  
 EDGWARE, BLACKING BOTTLE  
 ENFIELD, MOON UNDER WATER  
 ENFIELD, OLD WHEATSHEAF  
 NEW BARNET, BUILDERS ARMS  
 NEW BARNET, LORD KITCHENER  
 NEW BARNET, RAILWAY BELL

### OUTLETS – NORTH WEST PUBS

NW1 LORD NELSON  
 NW1 QUINNS  
 NW1 SPREAD EAGLE  
 NW2 BEATEN DOCKET  
 NW3 FLASK TAVERN  
 NW3 THREE HORSESHOES  
 NW4 CHEQUERS  
 NW4 GREYHOUND  
 NW4 PICKLED NEWT  
 NW8 PRINCESS ROYAL  
 NW9 J.J. MOONS  
 NW9 MOON UNDER WATER  
 NW9 WHITE LION OF MORTIMER  
 NW10 COLISEUM  
 NW10 GRAND JUNCTION ARMS  
 NW10 OUTSIDE INN  
 NW11 WHITE SWAN  
 HAREFIELD, PLOUGH  
 HARROW, MOON ON THE HILL  
 HARROW WEALD, SEVEN BALLS  
 HATCH END, MOON & SIXPENCE  
 KENTON, NEW MOON  
 NORTH HARROW, J.J. MOONS  
 RUISLIP, J.J. MOONS  
 SOUTH HARROW, J.J. MOONS  
 STANMORE, MALT HOUSE  
 WEALDSTONE, ROYAL OAK  
 WEALDSTONE, SARSEN STONE  
 WEMBLEY, J.J. MOONS

### OFF TRADE

N1 Beer Shop, Pitfield Street  
 NW6 Grogblossoms, 235 West End  
 Lane

### CLUBS

NW4 HENDON SOCIAL CLUB,  
 Middlesex University Bus,  
 School

*Continued on page 39*

