



A Guide to Real Ale in Camden and Euston

including
Kentish Town,
Dartmouth
Park,
Primrose Hill

£2



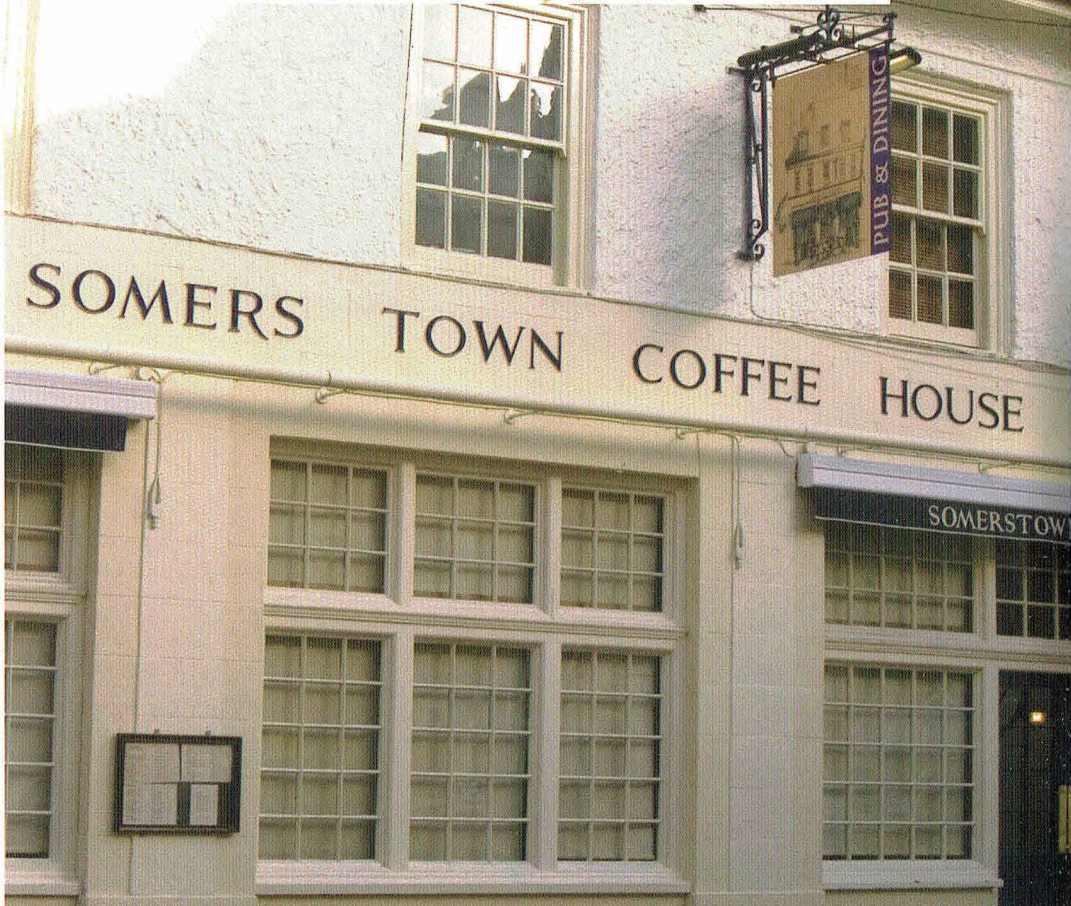
**CAMPAIGN
FOR
REAL ALE**

Edited by
Gary White

Sponsored by Wells and Young's

Over 70 pubs in London's postal districts of
NW1 and NW5 listed and reviewed!

Wells  Young's
BREWING COMPANY



A word about our sponsors

Wells and Young's is one of our newer brewing companies, although the history of its owners goes back much further. The company was formed in 2006 following the merger of the brewing interests of *Charles Wells* of Bedford (established in 1876) and *Young's* of London (established in 1831). The Young's brewery at Wandsworth was closed and all production has been transferred to the site at Bedford, where there has been a brewery since 1976, the company having had the foresight to leave its cramped town centre site and move to the western outskirts of town. In terms of cask beer production, the brewery will sit third in size behind Greene King and Marston's. Production is likely to grow further with the recent acquisition of the rights to the Courage portfolio of beers. The two original companies continue to operate their pub own estates.

A Guide to Real Ale in Camden and Euston

**including Kentish Town,
Dartmouth Park, Primrose Hill**
(covering all NW1 and NW5)

Edited by Gary White

First Edition, March 2007

© CAMRA 2007

ISBN: 978-1-85249-243-4

Published by the North London Branch of the Campaign for Real Ale
<http://www.camranorthlondon.org.uk>

